

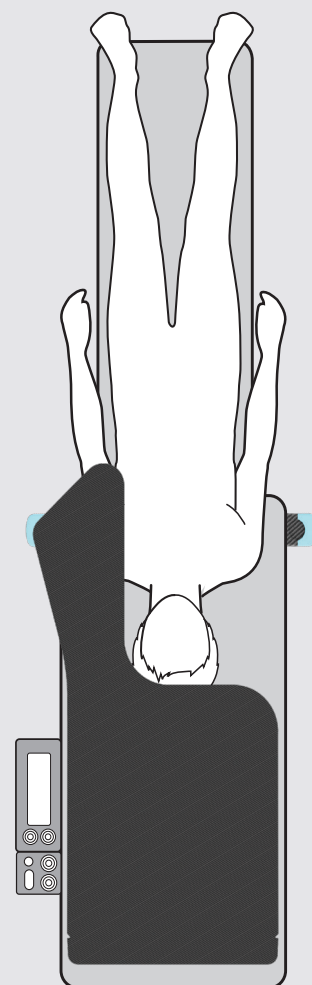
ANTEGRADE IR PLATFORM

An ideal work surface for antegrade femoral approach.

The Antegrade IR Platform offers a stable, radiolucent, height and length appropriate work surface, providing clinical benefits to the current practice of laying procedural equipment on the mattress and patient. It is the ultimate solution for catheter/guide wire manipulation, presenting a large surface area conveniently aligned with the femoral artery site for supporting equipment during a procedure.

The narrow portion extends alongside the patient towards the femoral artery, offering a steady platform for the clinician to rest their wrists on during wire manipulation. The legs can be adjusted to the appropriate height and locked for the duration of the procedure, ensuring a stable work surface. If a longer work-surface area is required, the optional extension can be locked onto the end of the platform, allowing operators to work from the same working surface side by side.

Crafted from carbon fibre composite and high-performance engineering plastics, the Antegrade IR Platform is light-weight yet strong and has a high resistance to chemical attack.



KEY FEATURES

Strong stable work-surface

Alignment with Femoral site

Fits all tables

Quick set-up and removal

Easy positioning

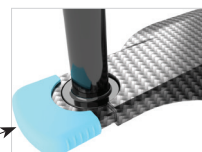
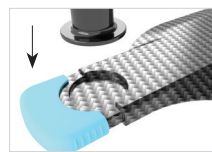
Radiolucent

Optional extension

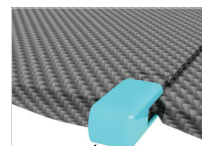
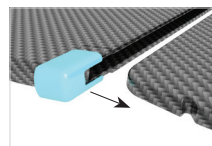
Easy to clean



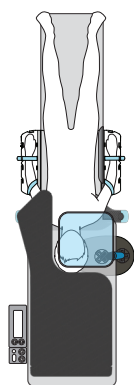
FAST SET-UP AND POSITIONING



Leg lock to base



Extension locks to Platform



USING THE DRAPE SUPPORT* WITH THE ANTEGRADE IR PLATFORM

Ideally used in conjunction with the Adept Medical Drape Support, this combination of products offers optimal patient comfort through creating a spacious environment beneath the drape.

Placing the Drape Support within the cutaway portion of the platform surrounding the patient's head will offer improved patient comfort and provide a surface area to prevent the drape from sagging.

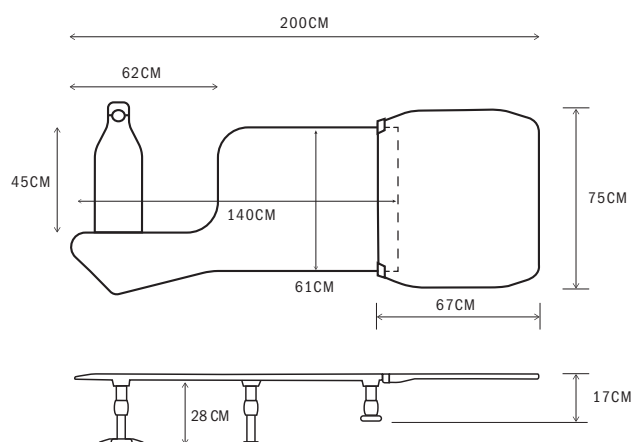
***ARMSURE (AM0600) AND DRAPE SUPPORT (AM1000) are not included with the Antegrade IR Platform.**



ARMSURE* COMPATIBLE

With restless patients, the Antegrade IR Platform is compatible with the ArmSure (AM0600), a complete arm immobilisation solution.

SPECIFICATIONS



Product Codes:

Antegrade IR Platform: AM0440 | IR Platform Extension: AM0410

Antegrade IR Platform + Extension: AM0430

Antegrade IR Platform weight: 4Kg

IR Platform Extension weight: 3.6Kg

APPLICATIONS

Interventional Radiology

- Vascular Procedures via the Antegrade Femoral Approach



EC REP



EC REPRESENTATIVE

Emργο Europe
Prinsessegracht 20
2514 AP The Hague
The Netherlands

For more information please visit
www.adeptmedical.com/antegrade-ir-platform